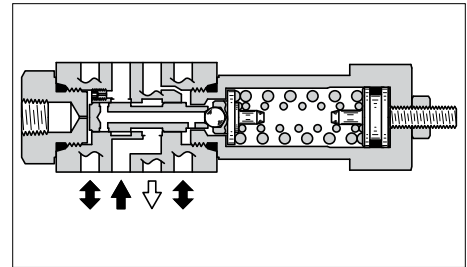


## Reducing Modular Valves

### Specifications

Model Numbers	Max. Operating Pressure MPa (PSI)	Max. Flow L/min (U.S.GPM)
MRP-005-*-20/2090	25 (3630)	15 (3.96) *

★ If the pressure is set below 1.6 MPa (232 PSI), the maximum flow is limited. See the minimum adjustment pressure vs. maximum flow characteristics and during use, stay within the shaded zone on the graph.

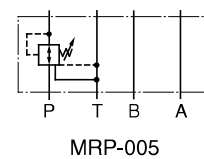


### Model Number Designation

F-	MRP	-005	-B	-20	*
Special Seals	Series Number	Valve Size	Pres. Adj. Range MPa (PSI)	Design Number	Design Standard
F: Special Seals for Phosphate Ester Type Fluids (Omit if not required)	<b>MRP</b> : Reducing Valve for P-Line	<b>005</b>	<b>B</b> : *-7 (*-1020) ★ <sup>1</sup> <b>C</b> : 3.5-16 (510-2320) <b>H</b> : 7-24.5 (1020-3550)	<b>20</b>	Refer to ★ <sup>2</sup>

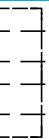
★ 1. See the "Minimum Adjustment Pressure vs. Maximum Flow" of the next page for the item marked \*.  
 ★ 2. Design Standards: None ..... Japanese Standard "JIS" and European Design Standard  
 90 ..... N. American Design Standard

### Graphic Symbol



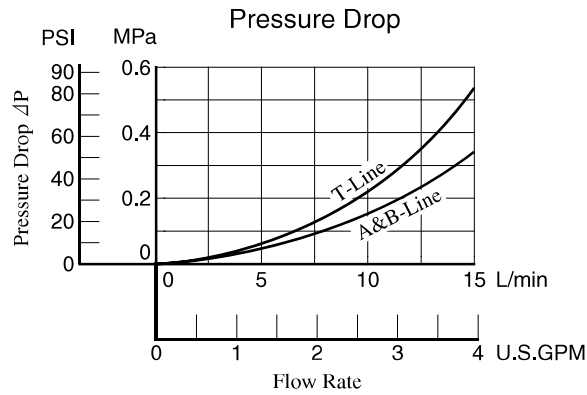
### Instructions

- The minimum adjustment pressure equals the value obtained from the minimum adjustment pressure characteristics plus the tank line back pressure of the next page. This back pressure should include the value of the T-line pressure drop characteristics of the valves stacked to the base plate side of the modular valve.
- To make pressure adjustment, loosen the lock nut and turn the pressure adjustment screw clockwise or anti-clockwise. For an increase of pressure, turn the screw clockwise. Be sure to re-tighten the lock nut firmly after making adjustment to the pressure.

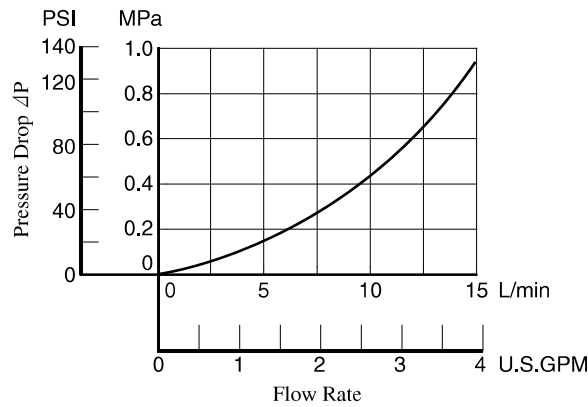


■ Typical Performance Characteristics

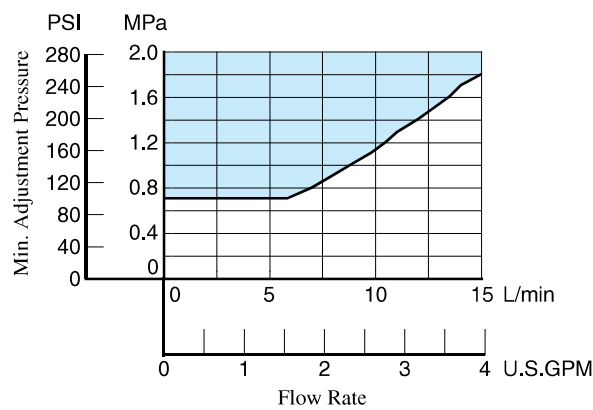
Hydraulic Fluid: Viscosity 35 mm<sup>2</sup>/s (164 SSU), Specific Gravity 0.850



Pres. Drop at Spool Fully Open (P-Line)

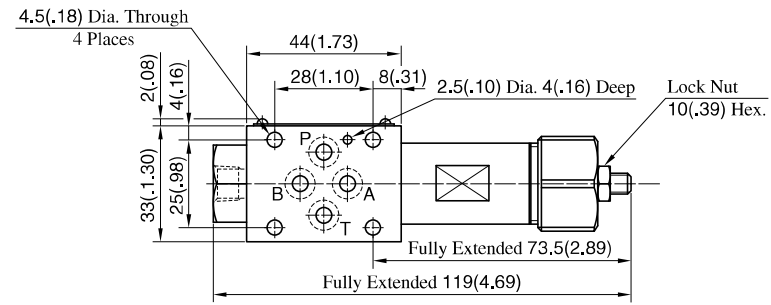


Min. Adjustment Pressure vs. Max. Flow

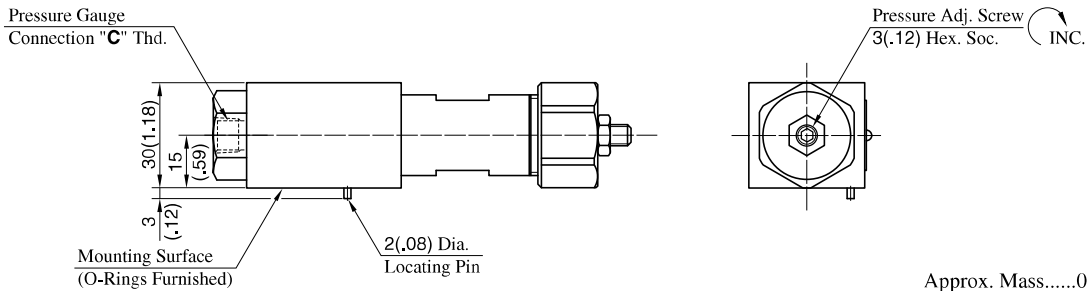


## MRP-005-\*-20/2090

**DIMENSIONS IN MILLIMETRES (INCHES)**



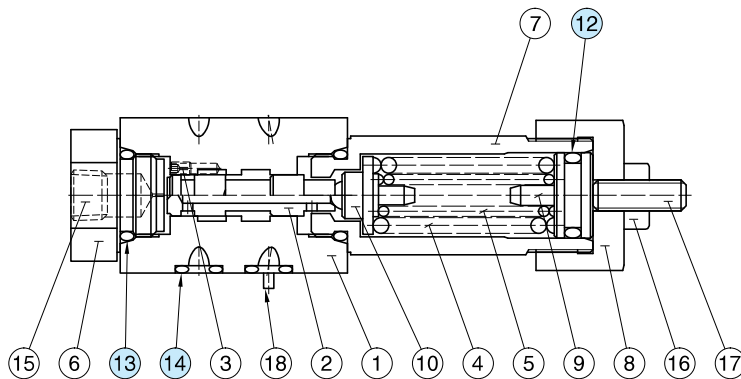
Model Numbers	Thread Size "C" Thd.
MR*-005-*-20	Rc 1/8 = 1/8 BSP.Tr
MR*-005-*-2090	1/8 NPT



Approx. Mass.....0.45 kg(.99 lbs.)

### Spare Parts List

## MRP-005-\*-20/2090



### List of Seals

Item	Name of Parts	Part Numbers	Qty.	Remarks
12	O-Ring	SO-NA-P12.5	1	Included in Seal Kit Kit No. : KS-MRP-005-20
13	O-Ring	SO-NB-P14	2	
14	O-Ring	SO-NB-P6	4	